



The school boasted facilities such as a football field/cricket pitch, tennis lawn, a rifle range, a chapel, a gymnasium and a swimming bath. There would often be parents cricket matches and the dormitories were well looked after.

During the first world war, most of the teaching staff at the school were female as most male teachers were away fighting in the great war.

In the early hours of the 9th of November 1925 a major fire broke out causing considerable damage to the insides of the school. Luckily, nobody was injured in the fire.

In 1923, George Ferrier, the assistant schoolmaster was killed at the age of 21 when he was hit by a motor cycle a couple of roads away from the school.

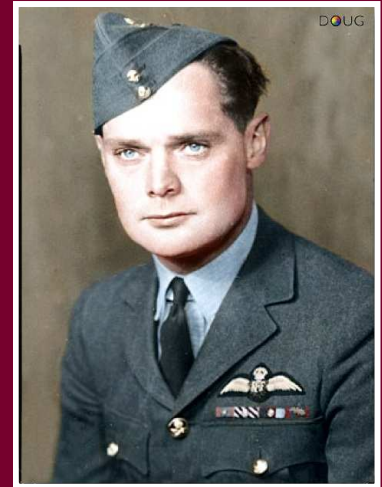
When the school moved from Eastbourne in 1935 it went to Heron's Ghyll near Uckfield where it remained until 2004 before closing.

Famous Faces

Despite the fact that many famous faces were taught at Temple Grove, two in particular were students during the school's time at Eastbourne.

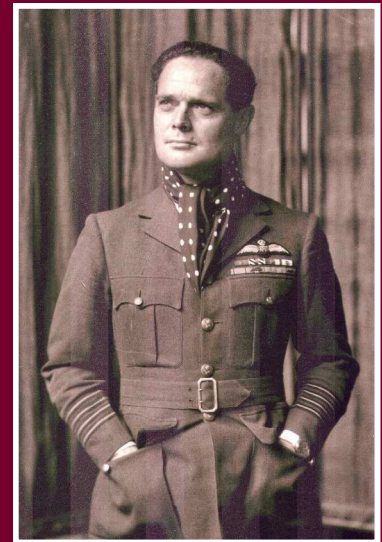
Sir Douglas Bader [1910-82]

Despite being born in London, Bader went to school in Eastbourne at Temple Grove before going to study at Cambridge University. He then joined the RAF and trained as a pilot. He was often in trouble with the RAF for flying illegal or dangerous stunts and in 1931, while practising for an air show, he crashed resulting in both his legs being amputated. Despite this he taught himself how to do basic tasks and could even still fly a plane although he was forced to leave the RAF.



With the outbreak of war he managed to persuade the RAF to let him rejoin and he soon became a flying ace, flew in the Battle of Britain and won the DSO and DFC medals before being promoted to Wing Commander. In 1941 he crashed over France and was made a prisoner of war. He was treated extremely well by his captors and they even allowed the RAF to parachute a false leg in for him as he lost one in the crash. After trying to escape multiple times, Douglas was moved to Colditz and remained there for the rest of the war.

After the war Bader campaigned a lot for people with disabilities which earned him a knighthood in 1976. In 1982 he died from a fatal heart attack.



Brian Johnston [1912-94]

Johnston was born in Berkhamsted but went to Temple Grove before going to Eton where he developed his love for cricket. He wanted to be an actor but was forced into the family coffee business. He then fought in the second world war, during which he earned the Military Cross for gallantry. After the

war, Johnston joined the BBC and became one of the first broadcasters to work in both television and radio. He commentated on all major occasions including the funeral of King George VI and the coronation of Queen Elizabeth II as well as presenting a number of light entertainment and children's shows.

For nearly fifty years he was also the voice of cricket on both TV and radio. When he died in 1994 he was described as 'the greatest natural broadcasters of them all'.



The Wars

As well as Douglas Bader there were many other students that went to Temple Grove Preparatory School that also fought in the second world war. There is a memorial on the wall in the main entrance of Temple Grove which commemorates those who attended Temple Grove and died fighting for their country.

There is also at least one student who attended Temple Grove in Eastbourne and fought in World War One. John Leslie Wellesley-Miller is recorded as a pupil at Temple Grove in 1911 but died in 1916 aged 18 in WWI. Students got a day off when the WWI armistice was signed in 1918.

During WWII the site was occupied by the National Amalgamated Approved Society who administered National Insurance payments, because they had to evacuate their London offices due to the war. There were 800 employees from the NAAS situated on the site and the air raid shelter used during WWII can still be found, under the entrance steps to Temple Grove. Temple Grove also helped with the food shortages during WWII by growing 12 tonnes of potatoes and carrots for the town.

FIELD SERVICE	
REPORT of Death of an Officer to be forwarded to the War Office with the least possible delay after receipt of notification of death on Army Form B. 213 or Army Form A. 36 or from other official documentary sources.	
REGIMENT or CORPS	1st. Bn. The Buffs. Squadron, Troop, Battery or Company
Rank	2nd. Lieutenant.
Name	WELLESBY-MILLER. J.
By whom reported	Officer Commanding 1st. Bn. The Buffs.
Date of Death	15.9.16.
DIED	Place or Hospital In the Field, France.
	Cause of Death Killed in Action.
	Place of Burial Not known.
State whether he leaves a will or not.	do.

Dental Estimates Board (DEB/DPB)

The Dental Estimates Board (later changed to Dental Practise Board) was set up on the first day of the NHS on July 5th 1948.

The main role of the DEB was to give correct payment to the 15,000 NHS dentists in England and Wales as well as monitoring the quality of the NHS's dental treatment.

At its peak the DEB employed over 2,000 staff at the site making it the joint highest employer in Eastbourne at the time. 35 million dental claim forms were processed every year at the DEB.

To account for the high number of staff and the large workload, multiple extensions were made to the site. In 1952, Block 'D' was built which is the largest building on the site and is currently the heart of the secondary school. In 1969 the 'Computer Block' (pictured bottom-right) was erected which stretched from the current site of the atrium all the way to where the sports hall currently stands. During the 1970s a pavilion was built to accompany the cricket pitch on the field. Finally, in 1987 Block 'H' was added which is where the library is now.

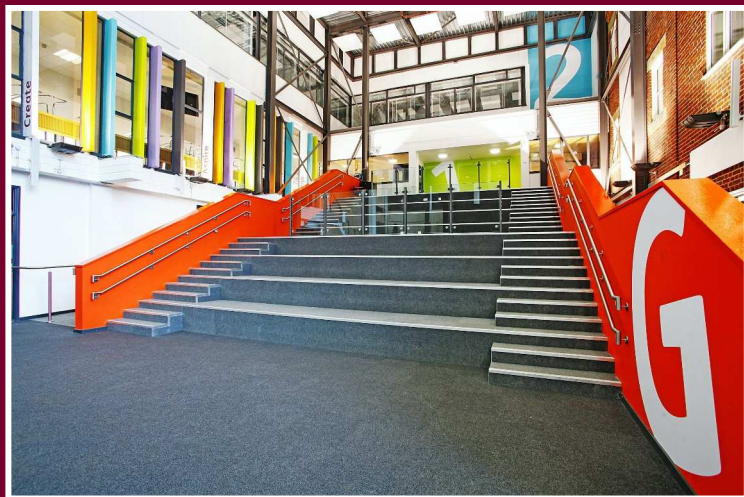


As the world became more technological there was less need for so many staff at the DPB as their job could be done by technology so, over time, the amount of staff was reduced until it didn't make sense to have such a huge site. The remaining workers moved to smaller offices in Eastbourne's town centre, with the last people leaving in July 2012. The DPB was a big part of the town and most Eastbourne residents know someone who used to work there at some time.



Gildredge House

Gildredge House Free School opened in 2013 and now has students ranging from the ages of 4-18. To get the site ready to be a school again more changes were made to the site. The 'Computer Block' and the pavilion were both destroyed. The pavilion was replaced with a Multi-Use Games Area (MUGA), a sports hall was erected at the bottom of the site by the woods and a new block was built for the use of lower school years and the land in



between became a 'nature' and play area for the younger students. The courtyard between blocks 'F' and 'B' was roofed over, a glass wall put in to block it in and it was turned into a large atrium for assemblies etc. (pictured left)

The building at the back of Temple Grove was destroyed to allow minibuses to pass through. Many other areas of

the site were locked off and blocked up for health and safety reasons such as the Master's House and the bridges connecting it to the rest of the school, the air raid shelter and other miscellaneous storage and boiler rooms. The old sanatorium was also converted into a centre for students with issues or needs. There are some plans to develop Master's House but those plans are still in their infancy.



Secrets of the School

With so much history, here are some secrets and locations that you may not know existed or what is in them. The numbers in brackets refer to pages on which there are photos of the place. This makes it easy to refer back to.

01. Temple Grove Bridge [18,24]

The bridge that links Temple Grove to Master's House can be seen from the plaza and courtyard below but has been blocked up on the Temple Grove side since the school opened. It's still accessible from Master's House but from Temple Grove you can only see the wall that blocks your way.

02. Master's House Bridge [18,24,29]

The other bridge from Master's House with its porthole windows links to Block 'D' at where the 'Gateway' is currently situated but has again been blocked up meaning it's only accessible from Master's House. From Block 'D' you can see the wall that blocks the bridge.

03. The Tunnel [23]

There is, in fact, a small tunnel that runs under the school all the way from the current Estate's Office to the D.T room on the other side of the school. It is heavily padlocked and blocked off and is only large enough for a person to crawl or stoop through. The entrance to it is visible, however, at the end of the Estate's corridor.

04. Room B67 [25]

This room is right at the top of Temple Grove and is bolted shut making it impossible to open. The room occupies the black & white triangular tip to Temple Grove when viewed from the outside. Inside it is believed to be just a small, empty office.

05. Air Raid Shelter [20,21,25]

The air raid shelter used during WWII is situated beneath the entrance to Temple Grove in a room called B5 which is accessible from the sports corridor but is permanently locked.

06. Upper Boiler Room [23]

Directly above the current science labs is a two-storey room on the roof with porthole windows. It can be seen from some angles in the school but is obviously highly off-limits to students.

07. Lower Boiler Room [23]

Below the science labs is another large open room that can only be accessed by a large, metal, black staircase outside the building that is heavily fenced off. The door to get in is also well secured.

08. Storage Room [25]

This large storage room used to contain two sinks and has a sub-room to it. It is on two levels, of which both entrances are walled up making it impossible to ever enter. The two entrances can be seen on the stairwell, hiding what is a large blocked up storage place/bathroom.

09. Old Lift Shaft [19,26]

As well as the lift that is operational near to the dining hall and the one in Master's House, there is also an abandoned lift shaft in Block 'D' near to the 'Gateway' area that is now blocked up, though you can see the lift entrance on both levels and the 'Call lift' button next to it.



The Supernatural

The school is also supposedly very haunted with stories of the paranormal coming from a multitude of sources over the years. All the following stories are genuine stories told by real people. It's up to you, which you believe. There was plans to have an overnight investigation of the site a few years back which was approved by the then headteacher, but the opening of the sixth form and the departure of the headteacher caused the plans to fall through although there is hope the plans may return one day to separate the fact from fiction.

Rev. H.W. Waterfield

Temple Grove's only head teacher supposedly still walks the halls of the school. Specifically, he is said to be seen on the highest floor of Master's House where he used to live. DPB workers have said they feared going onto that floor on their own and often there would be footsteps or unexplained knocking.

George Ferrier

It is believed that a teacher still walks through the Temple Grove building, as people have repeatedly heard slow, steady footsteps coming down the corridor, stopping when the person has turned around or come out their room. It is not known exactly which teacher it is, but it could possibly be the assistant schoolmaster, George Ferrier, who died age 21 after being hit by a motorcycle near the school.

Sanatorium Nurse

A sanatorium nurse is believed to walk the whole site, not just the sanatorium, wearing a white bonnet. Two students, neither of whom knew any of the school's history, went to a teacher, one crying, saying they had seen a 'old-fashioned hospital woman' walking across the end of the Temple Grove corridor on the ground floor.

Child

There have been many reports of laughing, quick footsteps and playful knocks in Temple Grove which has been accounted to the ghost of a former student. It cannot be known which student it is but some think it is the ghost of James Leslie Wellesley-Miller who attended the school when he was around 10 years old and died aged 18 in WWI. One person who worked on the redevelopment of the site in 2013 said a child held a door open for him but when he turned around to thank them, there was nobody there.

Dark Figure

As well as the former nurse, there is another story about the sanatorium. A builder who was doing the renovations for Gildredge House before it opened walked into the building, turned to their right to look into the small corridor there only to see a small, dark figure standing there. The man ran out and refused to re-enter the sanatorium ever again.

The 2 Contractors

Another strange story is about two contractors who were working on the redevelopment on their own one evening, in what is now the DT room in Block 'D'. It is not known what happened that evening but they both ran out of the site and refused to ever return because of what happened. This is ever stranger because that area of the site is only 70 years old but it within very close proximity to the 130 year old Master's House.

The Attic

The small attic in the top of Temple Grove is a hotbed of activity with doors slamming on their own, the doorknobs turning of their own accord and things moving around the room. It's supposedly the second most haunted part of the Temple Grove building.

TG8

The classroom TG8 on the upper level of Temple Grove is supposedly the most haunted room on the site. It is believed that it used to be one of the dormitories but that is not confirmed. It is known for chairs to move on their own in this room and loud bangs can be heard, especially from the rafters above the room.

Master's House

Multiple people that used to work in this building during its time as the DPB say it is the creepiest building with an extremely eerie atmosphere and lots of unexplained events as well as the top floor being haunted, allegedly, by the old headmaster.

Other Phenomena

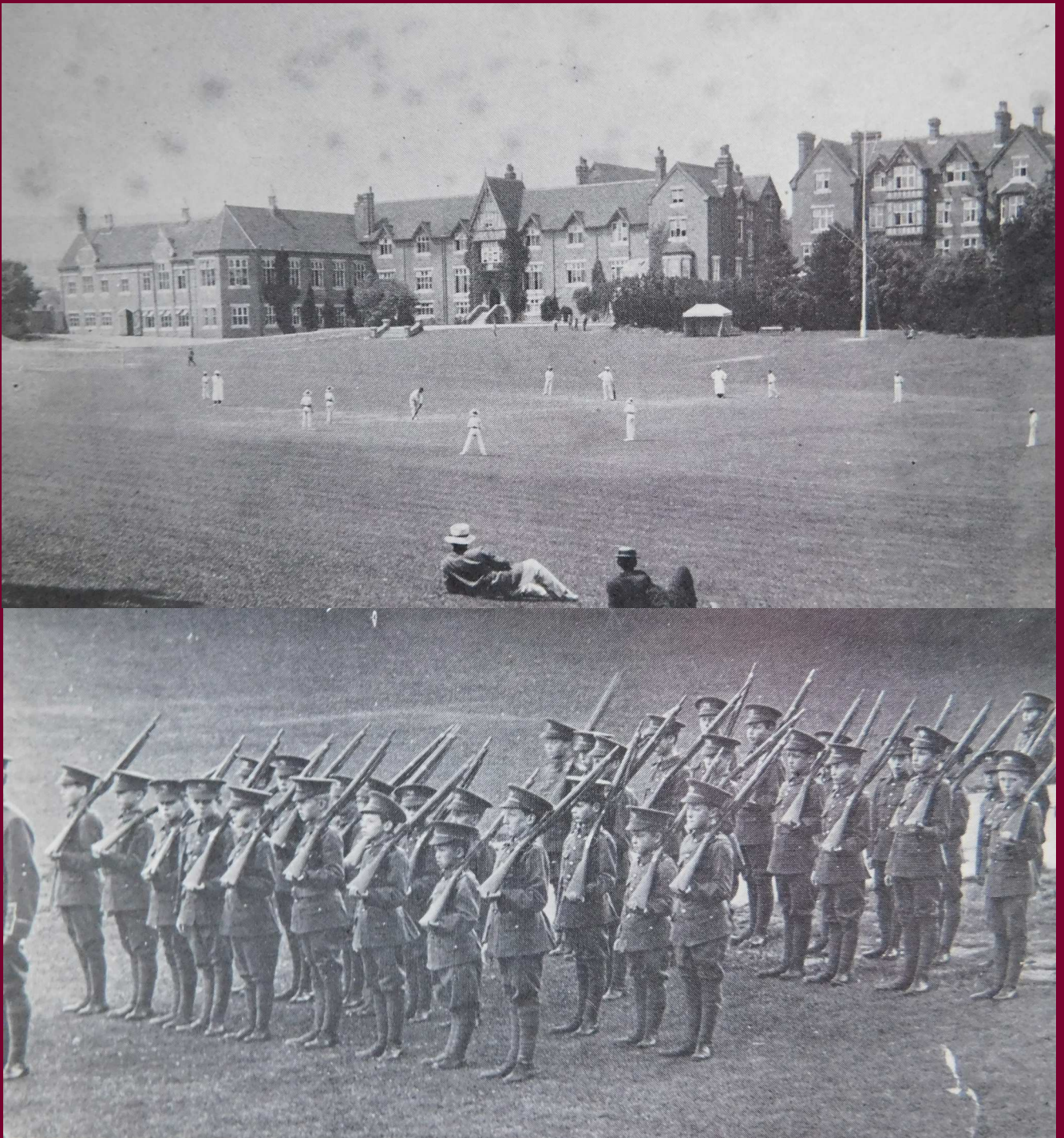
There are other creepy places in the school, with one student witnessing a cubicle door swinging open and shut on its own in a Temple Grove toilet. The air raid shelter was described as 'terrifying' by a member of staff at Gildredge House but has been locked off for so long, it has not been well investigated. Two members of staff accidentally wandered into Temple Grove on their own one evening only to hear a voice say "Are you two lost?". After looking around and in nearby rooms only to find nobody around, both of them ran out of Temple Grove.

Photo Collection

A collection of photos of the site past and present. Dates and captions are found at the bottom of the page.

T = Top
TL = Top-Left
TR = Top-Right
M = Middle
ML = Middle-Left
MR = Middle-Right
B = Bottom
BL = Bottom-Left
BR = Bottom-Right

Temple Grove Preparatory School

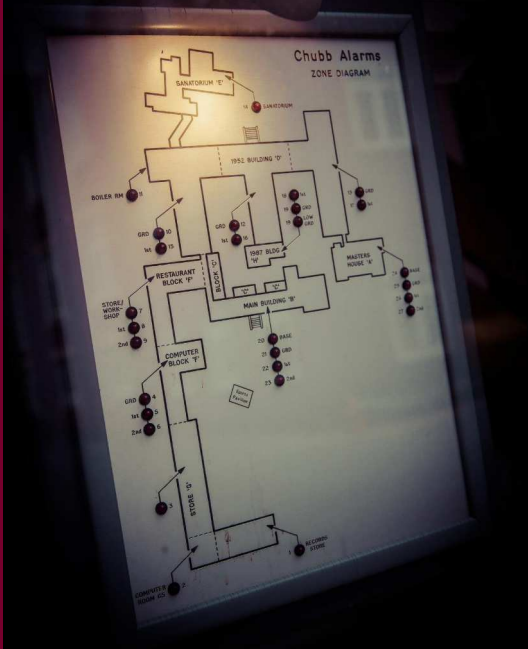


T - The school site during its time as Temple Grove Preparatory School. **B** - A photo of the Temple Grove Cadet Corps

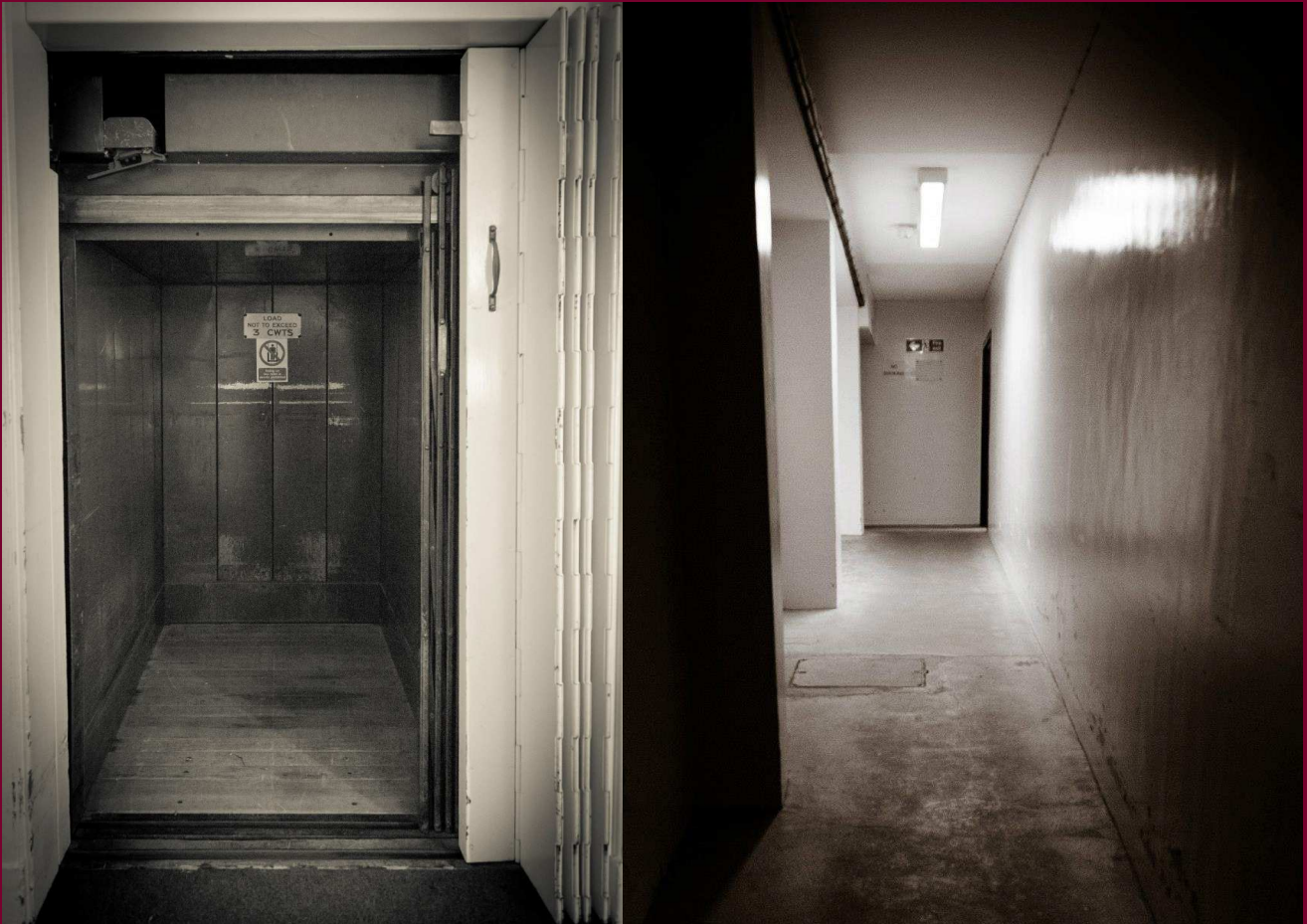


T - The school staff 3 years before the school moved to Eastbourne. H.W. Waterfield stands third from the left. **B** - End of term at Temple Grove c.1911

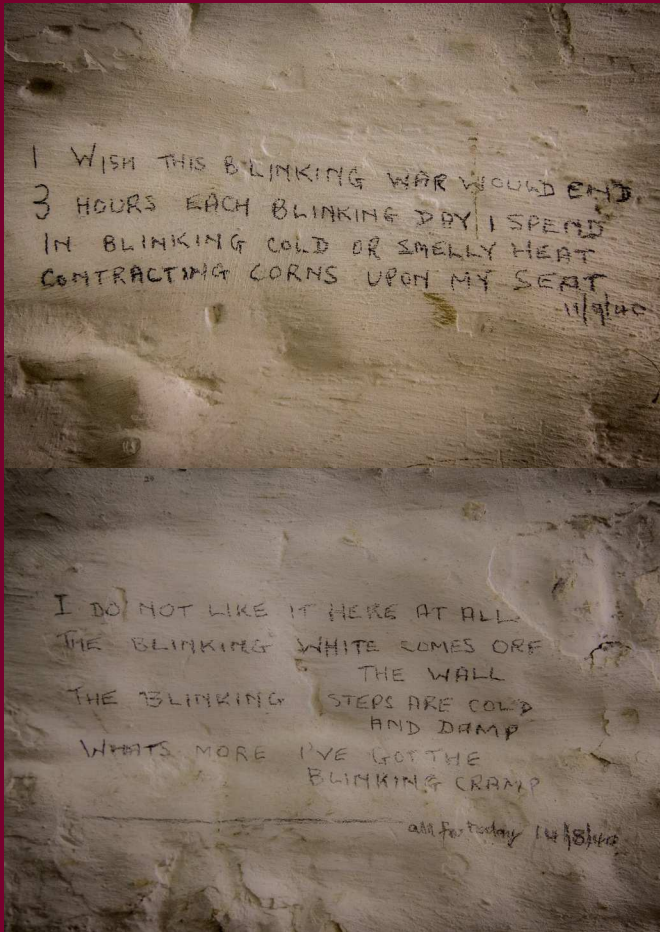
Dental Practise Board's Final Days



TL - Just some of the 71,000 folders that were stored in the DPB. **BL** - An old map of the site as the DPB. **TR** - The bridge that links Master's House to Block 'D' before the pictured doorway was blocked up. **BR** - The bridge that links Temple Grove to Master's House before the pictured entrance was blocked by a wall.



TL - The now abandoned lift in Block 'D' before it was blocked up. **TR** - A corridor, possibly in the now destroyed 'Computer Block'. **BL** - The old courtyard that became the Atrium which is the hub of Gildredge House. **BR** - A room on the ground floor of the Temple Grove building which contains electronics etc.



TL - WWII graffiti reading "I wish the blinking war would end, 3 hours each blinking day I spend, in blinking cold or smelly heat, contracting corns upon my seat." **ML** - More WWII graffiti reading "I do not like it here at all, the blinking white comes off the wall, the blinking steps are cold and damp, what's more I've got the blinking cramp" **TR** - The old entrance to the air raid shelter. **BL** - An old sketch of the DEB entrance. **BR** - The dining hall during the DPB era.



TL - A small corridor off the side of the air raid shelter. **TR** - The entrance to the air raid shelter from inside the shelter itself. **B** - The inside of the air raid shelter after the closure of the DPB, although it is likely in a similar, if a bit more dusty, state today.

Becoming Gildredge House

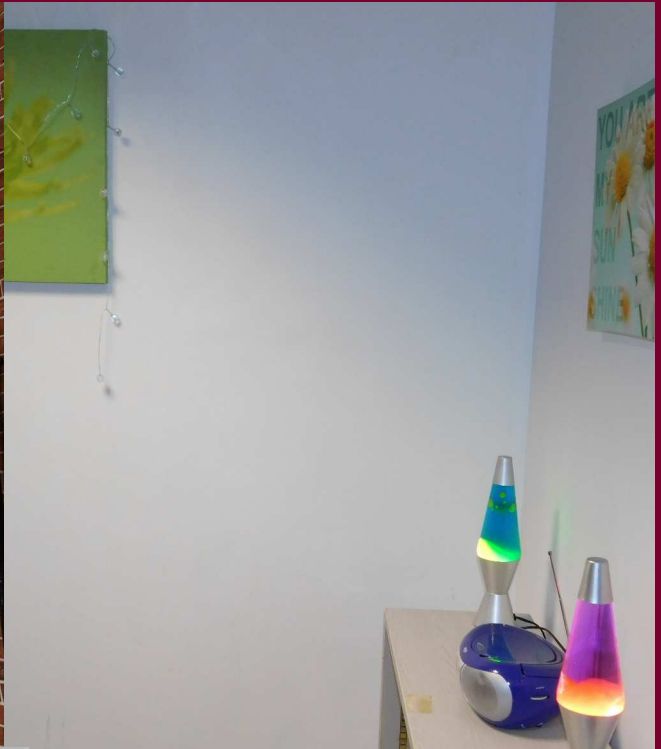


TL - The small building off of Temple Grove after being destroyed. **TR** - The previously mentioned building before being destroyed. **BL** - The building midway through its destruction. **BR** - An unfinished corridor in 2013 that was developed into classrooms.

Present Day Temple Grove + Block 'D'



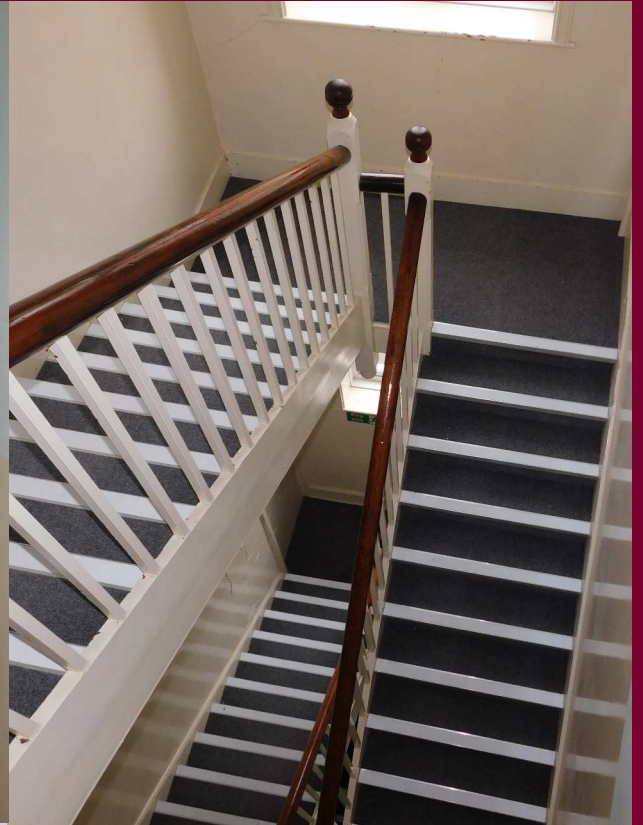
TL - The Upper Boiler Room above the science labs, as viewed from the roof. **TR** - The Lower Boiler Room from the inside. **BL** - The Lower Boiler Room and surrounding trench as viewed from outside the science rooms. **BR** - The entrance to the tunnel under the school, covered by lost property at the end of the Estate's Corridor.



TL - The bridge between Block 'D' and Master's House. **TR** - The panel of wall that blocks entrance to the bridge in the previous picture in the Gateway area. **BL** - The panel of wall that blocks the bridge that connects Master's House to Temple Grove. **BR** - The bridge between the two original buildings as viewed from the attic.

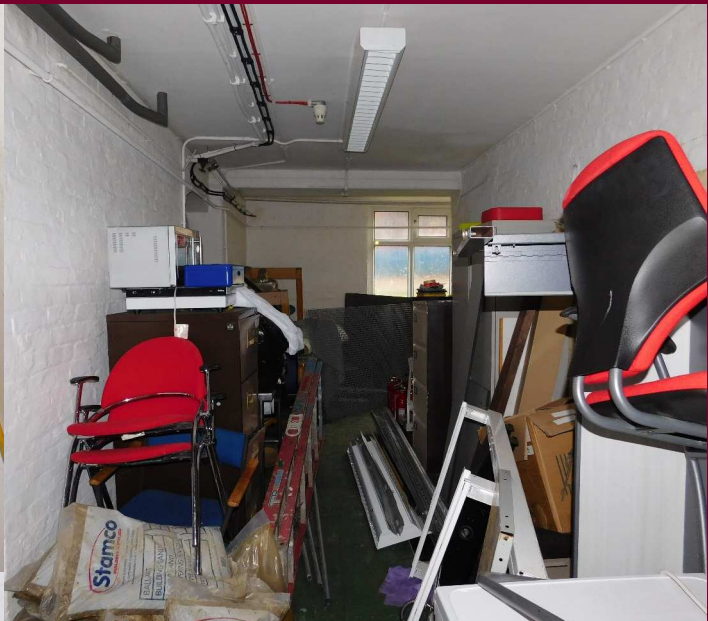


TL - The current door that leads to the air raid shelter from the present sports corridor. **TR** - Classroom TG8, said to be the most haunted on the site. **BL** - Room B67 that can be found on the highest floor of Temple Grove. **BR** - The two blocked entrances to the abandoned storage room/bathroom.

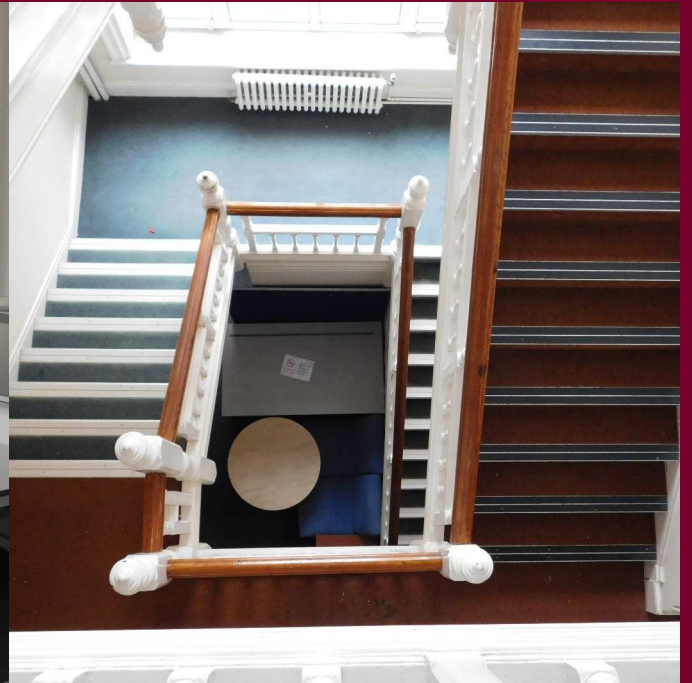


TL - The main corridor in the attic of Temple Grove. **TR** - The stairs leading up to the Temple Grove attic. **BL** - The abandoned lift shaft in Block 'D'. **BR** - The main room in the Temple Grove attic.

Present Day Master's House



TL - The hatch that leads into the roof of the building. **TR** - The main corridor in the basement floor , now full of miscellaneous storage items. **BL** - The stairway leading from the basement floor to the main 1st floor. **BR** - A storage room, of which there are many, on the basement floor with random objects from Gildredge House.



TL - The largest room on the main floor of the site. **TR** - The main staircase leading from the attic floor to the 1st floor. **BL** - The main corridor on the first floor with rooms either side. **BR** - The main lobby area on the 1st floor with the main entrance in the centre, an old reception desk on the right and the stairs on the left.



TL - The bridge that links to Block 'D' with the blocking wall just behind the doors.
TR - The lift that goes from the 1st floor to the attic, used for heavy goods. **BL** - The female toilet room that has been abandoned since the DPB's closure. **BR** - The main corridor on the 2nd floor leading to a fire exit out the side of the building.



TL - A room in the attic with peeling wallpaper. **TR** - Another room on the attic floor, looking out toward the end of the drive. **BL** - The main corridor on the attic floor with rooms coming off it. **BR** - A retro fireplace surrounded by peeling wallpaper in an attic room, showing the age of the building.

Index

Air Raid Shelter - 8, 10, 12, 20, 24
Atrium - 1, 9, 12, 19
Attic of Temple Grove- 14, 23, 25
Block 'D' - 9, 11, 12, 14, 18, 19, 22, 23, 29
Block 'F' - 10
Boiler Rooms - 10, 12, 22
Brian Johnston - 7, 8
Bridges - 10, 11, 18, 23, 29
Bronze Age - 1
Chomondly House Preparatory School - 1
Computer Block - 9, 10, 19
Dental Practise Board - 1, 9, 13, 14, 18, 20
Dining Hall - 20
Douglas Bader - 7
DT Room - 11, 14
Duke of Wellington - 3
Eastbourne - 1, 3, 5, 6, 7, 8, 9
East Sheen - 3
Facilities - 6
Fire - 6
Gateway - 11, 12, 23
George Ferrier - 6, 13
Gildredge House Free School - 1, 10, 13, 14, 21, 27
Grazing - 1
Ghost Story - 3, 4
Headteacher - 1, 3, 5, 13, 14
Heron's Ghyll - 6
H.W. Waterfield - 1, 3, 5, 13, 14, 17
John Leslie Wellesley-Miller - 8, 13
Lift Shaft - 12, 19, 25, 29
London - 1, 3, 8
Lower School - 1, 10
Master's House - 1, 5, 10, 11, 12, 13, 14, 18, 23, 27, 28, 29, 30
Meston Batchelor - 3, 32, 33
MUGA - 10
National Amalgamated Approved Society - 1, 8
New College Boys School - 1
NHS - 1, 9
Ottiwell Waterfield - 3
Paranormal - 13, 14
Pavilion - 9, 10
Room B67 - 11, 24
Sanatorium - 1, 13, 14
Saxon Era- 1
Sports Hall - 1, 10
Storage Rooms - 10, 12, 24
Teachers - 6, 13, 14
Temple Grove Building - 9, 10, 11, 12, 13, 14, 16, 17, 18, 19, 20, 23, 24
Temple Grove Cadet Corps - 5, 16
Temple Grove School - 1, 3, 4, 5, 6, 7, 8, 16, 17
TG8 - 14, 24
Tunnel - 11, 22
World War One - 5, 6, 8, 13
World War Two - 1, 7, 8, 12, 20

Bibliography

- https://www.thekeep.info/collections/getrecord/GB179_TGS_5_7_21
<http://www.rememberthefallen.co.uk/casualty/miller-john-leslie-wellesley/>
<http://www.gildredgehouse.org.uk/our-school/history-of-site/>
https://www.thekeep.info/collections/getrecord/GB179_TGS_5_7_19
[https://www.lewes-eastbourne.gov.uk/planning/application-summary/?
RefType=APPPlanCase&KeyText=010616](https://www.lewes-eastbourne.gov.uk/planning/application-summary/?RefType=APPPlanCase&KeyText=010616)
[https://web.archive.org/web/20110313100250/http://www.templegrove.org.uk/UserFiles/File/
TG%20History%20Nov%202009.pdf](https://web.archive.org/web/20110313100250/http://www.templegrove.org.uk/UserFiles/File/TG%20History%20Nov%202009.pdf)
[https://www.lewes-eastbourne.gov.uk/planning/application-summary/?
RefType=APPPlanCase&KeyText=150829](https://www.lewes-eastbourne.gov.uk/planning/application-summary/?RefType=APPPlanCase&KeyText=150829)
<https://americanliterature.com/author/mr-james/short-story/a-school-story>
[https://www.lewes-eastbourne.gov.uk/planning/application-summary/?
RefType=APPPlanCase&KeyText=141077](https://www.lewes-eastbourne.gov.uk/planning/application-summary/?RefType=APPPlanCase&KeyText=141077)
<https://hidden-london.com/gazetteer/east-sheen/>
[https://www.lewes-eastbourne.gov.uk/planning/application-summary/?
RefType=APPPlanCase&KeyText=140796](https://www.lewes-eastbourne.gov.uk/planning/application-summary/?RefType=APPPlanCase&KeyText=140796)
<http://www.gildredgehouse.org.uk/our-school/house-systems/>
[https://www.lewes-eastbourne.gov.uk/planning/application-summary/?
RefType=APPPlanCase&KeyText=140798](https://www.lewes-eastbourne.gov.uk/planning/application-summary/?RefType=APPPlanCase&KeyText=140798)
https://www.thekeep.info/collections/getrecord/GB179_TGS
[https://www.lewes-eastbourne.gov.uk/planning/application-summary/?
RefType=APPPlanCase&KeyText=140358](https://www.lewes-eastbourne.gov.uk/planning/application-summary/?RefType=APPPlanCase&KeyText=140358)
https://www.thekeep.info/collections/getrecord/GB179_TGS_13_2_3
[https://www.lewes-eastbourne.gov.uk/planning/application-summary/?
RefType=APPPlanCase&KeyText=130772](https://www.lewes-eastbourne.gov.uk/planning/application-summary/?RefType=APPPlanCase&KeyText=130772)
https://www.thekeep.info/collections/getrecord/GB179_TGS_5_7_16
<https://www.britishnewspaperarchive.co.uk/viewer/bl/0002017/19391021/156/0014>
<https://www.britishnewspaperarchive.co.uk/viewer/bl/0002018/19541106/209/0020>
<https://www.flickr.com/photos/gildredgehouse>
https://www.facebook.com/pg/mdlphotographic/photos/?tab=albums&ref=page_internal
'Cradle of Empire' by Meston Batchelor

A Final Thanks

Firstly, I'd like to thank Mrs. Maxwell for allowing the project to go forward in the way it did and always helping in any way. Secondly, to Simon for making time for us and letting us into Master's House for the photos. Thirdly, Mr. Reeves for taking an interest in the project and approving the plans. Hopefully, he'll approve the plans for the overnight investigation too. Finally I'd like to thank everyone around me for supporting the project and tolerating me rambling on about the school for weeks.

On a final note I still have a copy of 'Cradle of Empire' by Meston Batchelor which contains 12 pages specifically on Temple Grove at Eastbourne and its staff etc. if anyone wants to borrow it.

This booklet aims to give a useful insight into the school building, its secrets and its history as well as display images of the site both past and present to show how this historic site has progressed over time.