



ASPIRE  
Gildredge  
House

# WEEKLY NEWS

WEEK 1 | TERM 5 | 21 APRIL 2023



ASPIRE IN ALL THAT WE DO

## KEY REMINDERS

Parent Survey: Please Complete

To help us make sure we're providing the best standard of education for your children, we'd like to know how you feel about our school. We are asking students to complete a similar questionnaire too.

This will help us:

- Find out what we are doing well, and where we could do better.
- Decide which areas to prioritise in our school development plan.
- Make sure we're meeting the needs of you and your children.

We would be grateful if you could take the time to complete the survey to help us make Gildredge House the best it can be. Please complete the survey using the link in the email sent out earlier this week by Friday 28th April 2023 at 3.00pm. Replies will be treated in the strictest confidence. However, we may like the opportunity to talk to you in more detail about your answers, if deemed necessary. Thank you. Your feedback is very important to us.

**NUT FREE SCHOOL - To safeguard our students, staff and visitors, it is imperative that peanuts, nuts and anything nut based products are NOT bought into school or consumed on the premises.**

## Key Dates

27TH APRIL  
PARENTS EVENING  
YEAR 8

INTENDED STRIKE DAYS -  
27TH APRIL & 2ND MAY

17TH-26TH MAY  
CAREERS INTERVIEWS  
YEAR 10

## REMINDER

- Top up SQUID catering & trips accounts
- Twilight starts week 2
- NUT FREE SCHOOL - It is imperative that peanuts, nuts and any nut based products are not brought into school
- Summer PE Kits

## ASPIRE Points Totals



BADER

14196



CARTER

15233



HOPKINS

16475



JOHNSTON

16606



RAVILIOUS

16922



GILDREDGE HOUSE



@GILDREDGEHOUSE  
FREESCHOOL



WWW.GILDREDGEHOUSE.ORG.UK

# Exciting news: New Secondary library and Multimedia Space.

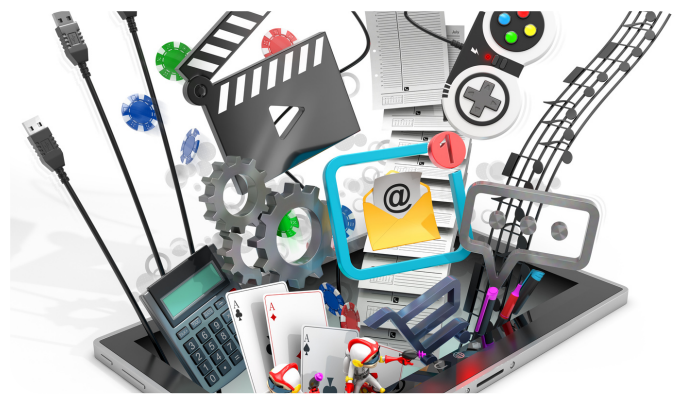
We are thrilled to announce that we will be creating a brand-new Secondary library and multimedia space, set to open in September 2023! This new addition to our school will provide countless opportunities for our students to enhance their literacy and learning across the curriculum and explore cutting-edge technologies and learning tools.

The library has always been a cornerstone of a well-rounded education, and our new Secondary library will be no exception. It will be stocked with an extensive collection of books, magazines, newspapers, and other resources catering to our students' diverse interests and reading levels. Our teachers and library leaders will guide and support students as they develop their research and information literacy skills, fostering a love for reading and a curiosity for learning that will serve them well throughout their academic journey.

In addition to traditional resources, we are also creating a multimedia centre. This flexible learning space will provide opportunities for students to engage with future technologies and learning tools, allowing them to learn outside the classroom and explore innovative ways to enhance their learning experiences. From virtual reality to podcasting and radio, our multimedia centre will be a hub of creativity and exploration where students can collaborate, experiment, and develop essential 21st-century skills that will prepare them for the future. It will be a valuable resource for our students at every stage of their educational journey, helping them develop the skills they need to succeed academically and thrive in the ever-changing world of today and tomorrow.

We are incredibly excited about this new development and look forward to welcoming your child to these spaces from September 2023. We are confident that this addition will greatly enhance their learning experiences and provide them with the tools they need to excel academically and beyond.

*Mr C Bull*  
Head Teacher



# Secondary

With the exciting news regarding the new library and multimedia space.... we need your help and support.

There are few things that are as powerful as a child regularly reading books. It has astonishing benefits for children: comfort and reassurance, confidence and security, relaxation, happiness and fun.

We wish to give Gildredge House families an opportunity to help us build together this amazing resource and we would love for every child at Gildredge House to have a book donated in their name. We of course appreciate that some families are not able help to donate financially to the library book fund, however If you can spare more than the cost of one book you can and agree for that donation to go against others to support all students having a named book. **Cost of book donation has been arranged as multiples of £5**, simply log into your sQuid account, look for Library Book Donation and donate. For every donation that we receive we will put a thank you certificate in every book donated with yours or your child's name on it. If you state that it is donated for other students we will choose one for you. If you would like to donate your time to help us set up the new library, please contact [j.logan@gildredgehouse.org.uk](mailto:j.logan@gildredgehouse.org.uk)



SQUID is open now for your donations.

We are also looking for **Business Sponsorships** to sponsor areas of the library and multimedia space, including out **Podcast Room and Virtual Reality equipment**. If you can help and would like to sponsor please email the Director of Finance and Administration, [j.logan@gildredgehouse.org.uk](mailto:j.logan@gildredgehouse.org.uk)

We are very excited to show you a preview of some of the plans for how the things will look when this amazing space is opened.



# Secondary

## Duke of Edinburgh Qualifying Expedition

On Thursday 30th March, 40 students set off from Gildredge House equipped with everything they needed for 2 days on their backs! Yes, this was their qualifying expedition for their Bronze Duke of Edinburgh Award. D of E is a great test of teamwork, resilience, patience, independence, ... as well as the skills involved in pitching tents, cooking outdoors, map reading.... They did incredibly well over the two days, especially to cope with the 50mph winds on Friday and the torrential rain.

We were all incredibly proud of what they achieved, as they should be too. It was lovely to see, despite the horrendous weather, they turned up at checkpoints with beaming smiles on their faces.

Well done to everyone involved and thank you to all the parents who had to clean up after they returned soaking and muddy! I also need to thank the staff who give up their time to accompany these expeditions and help train the students. Thank you so much to Mrs Bray, Mr Kenth, Mr Twilley, Miss Fender and Mr Myall.

*Mrs K Maxwell*

Head of Year 12





# Primary

## Year 2

On Wednesday, Year 2 enjoyed a fantastic visit from Phil at Jaws and Claws. Phil brought in lots of amazing animals for us to learn about. These included: Hissing Cockroaches, White Tree Frogs, Giant African Land Snails, a Bearded Dragon and two Redfoot tortoises.

The children were able to learn lots of interesting facts about all the animals as well as touch and even hold some of them. They asked lots of great questions and had a fantastic experience!



*Miss S Farrar*  
Year 2 Teacher



# Secondary

The year 11 students and teachers worked hard baking and selling a selection of exceptionally yummy cakes to raise funds to go towards the photo booth that the students would like to hire for their Prom.

We would like to send a massive thank you to all involved with the Teachers' Bake Off, the bakes all went down a storm.

We had two winners for the bake off:

Mrs Nicolle- For the most creative.

Mrs Stoakley- Best tasting.

We managed to raise £193.80 in total, so thank you everyone once again for taking part.



We had a visit by the Easter bunny on the final Friday of last term. During second break, the Easter bunny visited secondary and primary staff to deliver Easter eggs. This is the third year the Easter bunny has visited us.

We have been informed by the Easter Bunny's agent that this is likely to be the final year of such a visit.





# Secondary



An early start (6am departure) marked the beginning of our trip to the National Space Centre in Leicester.

From seeing the Gemini landing craft, to visiting the Rocket Gallery, learning about the Solar System to exploring the stars; students had plenty to discover in the main exhibition hall.

After lunch we had a presentation in the Sir Patrick Moore Planetarium to visually investigate our neighbouring planets; discovering that Venus has the longest day (243 Earth Days), Saturn has a hexagon storm, Mercury has the most extreme temperature range (-180 degrees to 430 degrees Celsius) and Uranus was once called George's Star.

Finally, the students formed small groups and programmed a Mars Rover to drive across a terrain map, completing challenges. Most groups fired at the alien but very few found the Mars rocks, let alone charge at the solar panels.

An amazing day spent learning about what science has achieved, and left us talking about what is left to achieve.



*Mr G Newport*  
Attendance Officer





# GHSPORT SUCCESS

★ Thank you to the parents who have supported the students in attending these events this term, we really value your support in enabling these opportunities to go ahead alongside the PE curriculum. ★

## YEAR 3 & 4 – GIRLS FOOTBALL TEAM

This week Year 3 & 4 Girls Football team took part in the Albion Cup, this is a competition for girls in Year 3 and 4 run by the Albion in the Community team.

Seven schools from around East Sussex took part in the competition which was held at Eastbourne Borough Football Club.

The Gildredge girls were amazing, they won all 8 games, scoring 34 goals and conceding just 1. They won a very close final against Ocklynge 1-0 to win the competition. This win means that they have qualified for the Sussex finals to be held at the Brighton & Hove Albion training ground, Lancing in the near future. Well done girls.



## NATIONAL INTER-COUNTIES CROSS COUNTRY

Last term eight athletes from Years 7 & 8 qualified in the top 20 of the Sussex School Cross Country Championships to represent Sussex at this event on Saturday.

Competing on a brutal course against the best athletes in the South and beyond, was a great learning experience. They were excellent representatives for their clubs, the school and Sussex.



*Mr S Myall*  
PE Teacher



# Gildredge House Attendance Policy

## Attendance Policy

At Gildredge House we have an Attendance Policy available at the above link.

Attendance summary Spring Term

At Gildredge House we believe that outstanding attendance is important to ensure children are safe and have full access to the educational provision made for them. We closely monitor attendance and punctuality and believe that attendance at school must be maximised in order to raise the achievement of all students and improve their prospects in adult life.

As term 5 begins we hope that the majority of winter viruses are behind us and we want to encourage everyone to strive towards an end-of-year attendance percentage of between 96% - 100%. All students currently around the 90% attendance mark have a high chance of achieving around 96% with excellent attendance in terms 5 and 6.

During this current academic year, our most common reasons for absence across both our Primary and Secondary phases are listed below. Please click on each of the links to access the NHS England guidance to find out more about managing and prevention:

[Diarrhoea and vomiting](#)

[Common cold and cough](#)

[Migraines and headaches](#)

We encourage families to contact key links in the school (Head of Year/Tutors/Pastoral team) if you would like to discuss ways to improve attendance. The school endeavours to work with families to make sure that any barriers or circumstances which may lead, or be leading to poor attendance are given the right attention and appropriate support.

Thank you for your support and for working together with us.

*Mrs S Driscoll*

Attendance Officer



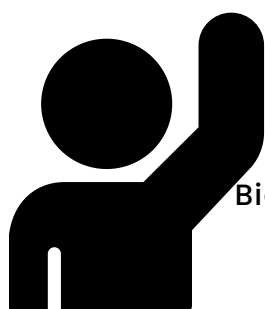
# WEEKLY CLASS ATTENDANCE

At Gildredge House, we believe that outstanding attendance is important to ensure children are safe and have full access to the educational provision made for them.

We closely monitor attendance for all students in both Primary and Secondary. We celebrate, weekly, the top two classes with the highest attendance rates in both phases of the school.

Week: 27th March – 31st March 2023

## Congratulations to:



**Primary**  
4B = 99.3%  
5A = 98%

**Secondary**  
10J = 97.9%  
7J = 97.4%

Big Congratulations to the overall Top Class Attendance for Spring Terms 1 and 2

**Primary**  
5B = 96.1%  
4B = 95.9%

**Secondary**  
7J = 95.9%  
7C = 95.5%



## MENU

WEEKLY MENU				
Gildredge House School Summer Menu - Week 2				
Monday	Tuesday	Wednesday	Thursday	Friday
Oven baked Sausages with Creamy Mashed Potato & Tomato Basil Sauce	Creamy Chicken Pasta with Spinach	Roasted Thyme Chicken Thigh & Roast Gravy	Mild Beef Mince Keema Curry with Carrots & Potatoes	Battered Fish of The Day
Broccoli Macaroni Cheese with Panko topped Crust	Pea & Mint Falafels served in Pitta Bread with Mediterranean Salad	Roasted Vegetable & Brie Puff Pastry Parcel	Mild Vegetarian Keema Curry with Quorn Mince	Vegetable Burrito with Cheddar Cheese
	Baby Steamed Potatoes	Sliced Carrots & Cauliflower Cheese	Poppadum	Chipped Potatoes
Garden Peas	Side Salad	Roast Potatoes	Basmati Rice	Baked Beans or Peas
Jacket Potato served with Baked Beans	Fusilli Pasta with Tomato Sauce	Jacket Potato with Tuna & Sweetcorn Mayonnaise	Fusilli Pasta with Tomato Basil Sauce	Jacket Potato Stuffed with Cheese & Spring Onions
Ice Cream Tub	Chocolate Brownie	Rice Krispie Square	Ginger Cake	Fresh Fruit Salad





