

KEY REMINDERS- SCHOOL VALUES

 **Ambition**- We relish new challenges or opportunities, always strive to do our best.

 **Support**- We collaborate, encourage, and help others whilst accepting and responding to support ourselves.

 **Perseverance**- We have self-belief in overcoming challenges to be successful.

 **Integrity**- We are honest and always do the right thing.

 **Reflection**- We consider our strengths and areas for development whilst making connections in our learning.

 **Empathy**- We understand the feelings and needs of others, supporting those who sometimes need our help.

Key Dates

3RD JANUARY |
FIRST DAY OF SPRING
TERM 1

12TH JANUARY |
CAREERS AND OPTIONS
EVENING- YEAR 9

17TH JANUARY |
FLU IMMUNISATIONS-
YEAR 7, 8, 9,

23TH JANUARY |
INSET DAY- SCHOOL
CLOSED TO ALL STUDENTS

27TH JANUARY |
CAREERS DAY-
YEARS 7 & 8

ASPIRE Points Totals



BADER

7636



CARTER

7966



HOPKINS

8473



JOHNSTON

8729



RAVILIOUS

8822

**PARTNERSHIP
COMPETITION SUCCESS**

GH SPORT SUCCESS



Year 7 Boys have qualified for the next stage of the Partnership Competition. This is a massive success and we are very proud of the boys and the sports Department who work tirelessly behind the scenes. They won all three games with the below results:

5 - 1 vs Cavendish

7 - 3 vs Ratton

6 - 3 vs Eastbourne Academy



Year 6 Boys football league has been very strong and have two weeks to complete. The girls have done very well by finishing joint 5th in the Year 5/6 Girls Competition.

Well done to all that took part!



PRIMARY LEAGUE

**YEAR 11 PARTNERSHIP
COMPETITION SUCCESS**

GH SPORT SUCCESS

Year 11 Boys have also qualified for the next stage of the Partnership Competition. This is also a massive success and we are very proud of the boys and the sports Department who work tirelessly behind the scenes.

They won the first game, drew one game and lost one match with the below results:

4 - 4 vs Cavendish

5 - 0 vs Ratton

1 - 4 vs Eastbourne Academy



NETBALL LEAGUE

Secondary Schools Area Netball Leagues - Year 11 team lost by one goal to their toughest opposition, with only 6 players.

CROSS COUNTRY

Secondary Area Cross Country - A clean sweep for the Year 7 Boys and Girls teams along with the Year 8/9 Boys and a 2nd place finish for the Year 8/9 Girls.

Thank you to The Saffrons and Eastbourne Hockey Club for use of the Astro and floodlights.

GH SPORT SUCCESS



Sussex School Games - Eastbourne Area Primary Schools Cross Country. Organised by Gildredge House and Ratton at The Saffrons.

Twenty four students represented Gildredge House as part of the Year 5 and 6 teams, 11 of which qualified to represent the Eastbourne Area in the next round of the Sussex School Games in Lewes in 2023. Well done to all who took part.

A massive Congratulations to Charlie who has won the Year 6 Eastbourne Partnership X Country Race. Recently he Captained the Sussex Schools U11 Football Team. We wish him every success in 2023! Well done!

If your child has recently been successful in a sporting event or competition please do get in touch and let us know. We would love to celebrate your child's success with them. Please email communications@gildredgehouse.org.uk or get in touch via the School Office.





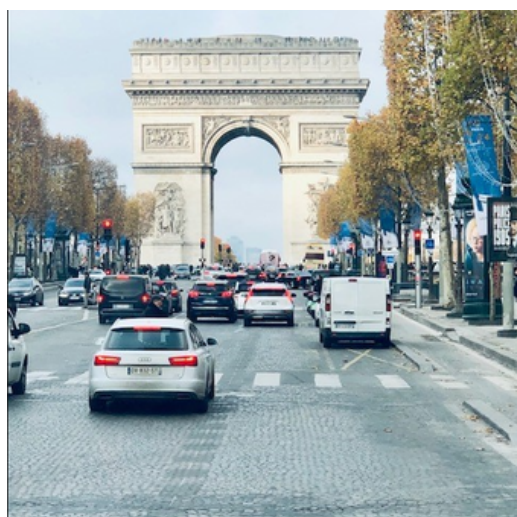
PARIS TRIP 2022 YEAR 9 - YEAR 11



It was nice to be able to organise trips abroad again, after the long covid period. It was a long awaited event for many students and I am glad that we finally made it happen. It was a successful trip, everyone was happy despite the early starts and the cold. Some students even said that it was the 'best trip they've ever had'. Year 9-11 students made us really proud by being responsible and polite at all times. We were very impressed by our students' conduct on the trip and it made the trip really easy to manage. I would like to say a special thank you to staff who came along and supported the trip: Mrs. Edwards, Mrs. Radwan, Mr. Kenth and Mrs. Nicolle. I hope that many international trips will happen after that.

Miss Celine Phung

Head of Modern Foreign languages



SETTING UP DEVICES



We realise students at Gildredge House may be receiving new electronic devices this Christmas. Sometimes it can be difficult to know where to begin in setting up devices. Attached are two videos, one for Android and one for Apple. I hope you find them useful. If the videos do not load I have linked the YouTube webpage.

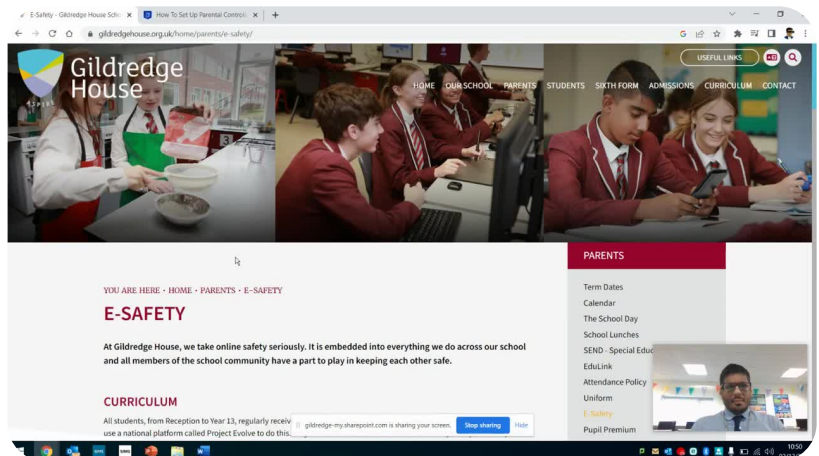
A great resource available to parents is the Gildredge House website. E-safety under "Parents" has a range of checklists and guidelines on phones, laptops and much more.

I hope you find these useful!

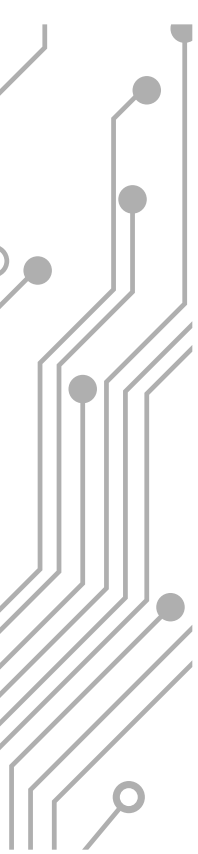
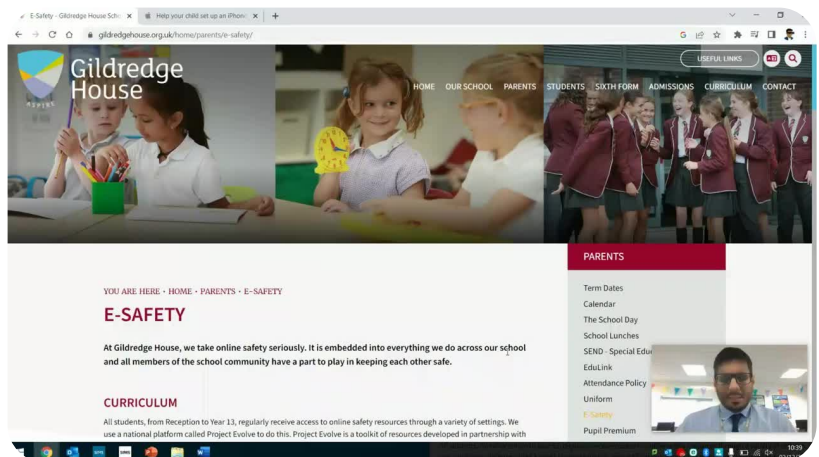
Mr. Kabir Kenth

Head of Computer Science

ANDROID



APPLE



WHAT DOES GOOD ATTENDANCE LOOK LIKE?

At Gildredge House we don't want good attendance we want great attendance. Attendance is paramount to students academic and future successes.

Missing School means that students miss out on fun projects and school activities and has a knock on effect with students struggling to catch up with work

OVER A SCHOOL YEAR AT GH WITH 6 LESSONS A DAY.

Percentage Attendance	Number of Days in	Number of School Days	Number of Lessons missed
100%	190	0	0
95%	180	10	60
94%	178	12	72
86%	163	27	162
85%	161	29	174
75%	143	47	282

Student Attendance

365 Days in a year.

Students are required to be in Gildredge House for 190 of them. This leaves students 175 days to be at home at the weekend and on Holiday.

GOOD ATTENDANCE IS 96% AND ABOVE

Student Achievement

As students struggle to catch up with work, we find they often take even more days off, to try and catch up. Ultimately this cycle is very hard to break and as you can see from the table has a massive impact on grades and class participation.

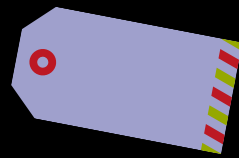
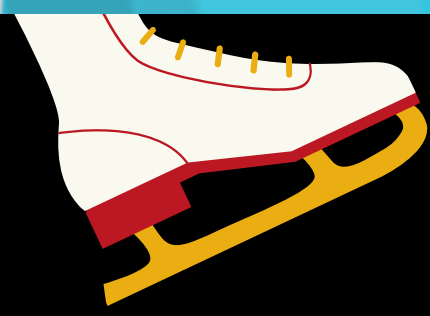
This also leads to poor relationships with peers as students do not get time to build relationships with the rest of their year group.

Attendance	Average Grade
100%	5.7
99-98%	5.3
97-95%	4.8
94-93%	3.5
Less than 93%	3

ATTENDANCE IS THE FIRST STEP TO ACHIEVEMENT

Eastbourne's Lightning Fibre
ICE RINK

EASTBOURNE ICE RINK



Thank you to the EASTBOURNE CHAMBER OF COMMERCE for providing Gildredge House with a discount code for 10% off tickets to the newly opened Eastbourne Ice Rink



**PROMO
CODE**

Eastbourne Ice Rink | Visit Eastbourne |

[CLICK HERE](#)

Lightning Fibre

[CLICK HERE](#)

(visiteastbournetickets.co.uk)



Use code
Gildredge10
to receive your discount on checkout.



