



Forecast of adverse weather conditions on Monday morning. Please leave more time to travel to School.



## Key Dates

12TH DECEMBER | FLU IMMUNISATION- YEARS 7, 8, 9,

13TH & 14TH DECEMBER | PERFORMING ART PLAYS

15TH DECEMBER | YEAR 9 PARENTS EVENING

16TH DECEMBER | LAST DAY OF TERM 2 SCHOOL CLOSSES AT 12:30

2ND JANUARY | FIRST DAY OF SPRING TERM 1

## KEY REMINDERS

Cycle safety

Safe and responsible cycling to and from school involves:

- Making sure you are aware of who else is around you, and how far away they are.
- Being aware of potential hazards.
- Always using lights after dark or when visibility is poor.
- Wearing light-coloured or fluorescent clothing can help other road users to see you in daylight and poor light. Reflective clothing and/or accessories (belt, arm or ankle bands) can increase your visibility in the dark.
- Avoiding clothes that may get tangled in the chain, or in a wheel or may obscure your lights when you are cycling.
- Wearing a correctly fitted cycle helmet that is securely fastened and conforms to current regulations



## ASPIRE Points Totals



BADER

7371



CARTER

7741



HOPKINS

8163



JOHNSTON

8405



RAVILIOUS

8537





# FOGH CHRISTMAS FAIR

FOGH would like to say a HUGE thank you to the school community and our sponsors for helping make it such a success. Thank you to everyone who donated time and gifts so generously, we wish you all a very Merry Christmas!



We would like to say a huge thank you to the FOGH committee and its members for making the fair a success. They have worked tirelessly behind the scenes and given time and endless energy to making these events a success.



**£5202**  
**Raised**



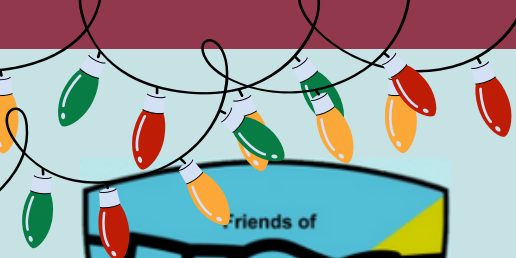
GILDREDGE HOUSE



@GILDREDGEHOUSE  
FREESCHOOL



WWW.GILDREDGEHOUSE.ORG.UK



# FOGH CHRISTMAS FAIR



## £5202 Raised



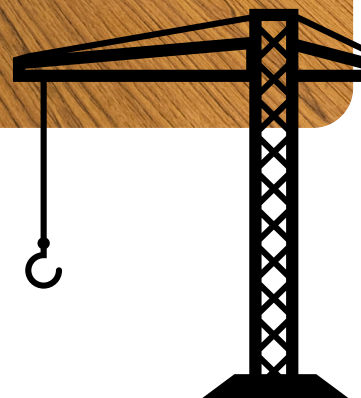


## PANTOMIME CHALLENGE YEAR 4 & YEAR 5

On Friday 2nd December we entered a Year 4 and a Year 5 team into the Schools Pantomime Challenge. Along with eight other Eastbourne Primary schools, our two teams of intrepid engineers were set the challenge of designing a model that could drill a hole, be driven, fly and hover, whilst housing a tiger safely in order to rescue Aladdin from his cave.

Maysie and Orla along with Billy and Jasper worked well to plan their design, work as a team and solve many problems along the way as they built their model from K-Nex.

Each of the children received a certificate for their hard work.





# BEBRAS CHALLENGE



## Bebras Challenge

Just after half term over 700 students in Year 3 – 13 took part in the Bebras challenge during their Computer Science lessons.

The Bebras Computing Challenge introduces computational thinking to students and is organised in over 50 countries all over the world.

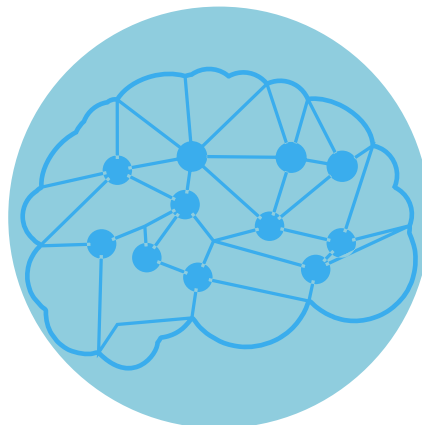
Computational thinking involves using a set of problem-solving skills and techniques that software engineers use to write programs and apps. Examples of these techniques would include the ability to break down complex tasks into simpler components, algorithm design, pattern recognition, pattern generalisation and abstraction.

Every student who participated in the challenge will be receiving a printed certificate. In addition, those who scored in the top 10% of their age category have been invited to the next stage of the competition (The Oxford University Computing Challenge).

We are really proud of how well all of our students did and look forward to building on this success next year

A special mention has to go to the below students who are through to the next round of this challenge:

- Jasper Mabilot-Young
- Nia Stern
- Esme Shannon
- Corey Plant
- Alice Hill
- Oscar Mizen
- Frank Breen
- Rosie Perry
- Ray Bradley
- Louis Sander
- Milad Delawar
- Florence Baxter-Scott
- Oliver Domurad



- Amy Dowle
- Charlotte Reynolds
- Oskar Lundin
- Michael Brown
- Harry Lipa
- Noah Ferguson
- Lara Yates
- Luther Collington
- Carter McGee
- Leonardo Tanner
- Tom Dowle
- Henry Stubbs

**We wish them every success as they represent Gildredge House.**





# Gildredge House Nut Free and Allergy Aware School

## We are a Nut-Free School

At Gildredge House we have a zero-tolerance policy against nuts and nut products.

As we approach Christmas, we realise more and more confectionary items have nuts included in the ingredients list. These aren't always easy to spot so we recommend checking any new or Christmas themed products thoroughly and ensuring they have no nuts or nut by-products.

Now is a good time to have a gentle reminder on where Gildredge House stand on nuts and allergies.

Allergy is hypersensitivity to a foreign substance that is normally harmless but produces an immune response reaction in some people. This can be a minor response such as localised itching or a severe response known as anaphylaxis or anaphylactic shock.

Gildredge House is a Nut-Free School and it is therefore imperative that peanuts, nuts and any nut-based products are not brought into school. Ingredients in products are not always obvious, so please check all packaging carefully e.g. pancakes filled with chocolate and nut spread or Pesto. Students are asked not to purchase these products on the way to school. Please reinforce this message with your child.

We take the allergies of those in our school community seriously, with mandatory first aid training for staff across Gildredge House in case of emergencies. We endeavor to keep members of our community safe. If you would like to find out more about allergies, please visit the [Allergy UK website](http://Allergy_UK_website). Allergy UK is the leading national charity providing support, advice, and information for those living with allergic disease.





# MENU NEXT WEEKS



	MONDAY	TUESDAY	WEDNESDAY	THURSDAY
<b>WEEK THREE</b>	Chicken Fajitas with Guacamole & Sour Cream Roast Vegetable & Brie Galette Spiced Potato Wedges Fresh Chopped Salad Citrus Sponge with Custard	Cottage Pie topped with Cheddar Mash Moroccan Style Vegetable Stew with Coriander Cous Cous Steamed Broccoli & Savoy Cabbage Steamed Syrup Sponge with Cream	Roast Chicken Thigh with Stuffing & Gravy Vegetable Sausage Roll with Onion Jam Roast Potatoes Roasted Root Vegetables Apple Crumble with Custard	Penne Pasta with Beef Ragù Sauce Vegetable Paella with Sun Blushed Tomatoes & Basil Oil Chopped Green Salad Garlic Bread Slices Berry Eton Mess

## Friday's Lunch Arrangements

If your child is eligible for FSM/UFSM a packed lunch will be available- Primary only. Secondary students can collect food from a limited menu during first break in the lunch hall.

## THE RISING COST OF LIVING



### Support for the rising cost of living

The festive season is fast-approaching, and we appreciate how difficult this time of year can be for many families. East Sussex County Council has a dedicated webpage, with a range of information to support families with the rising cost of living. Click the link above to find out more.

## PRIMARY ADMISSIONS TO 23/24 YEAR

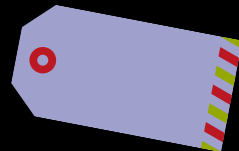
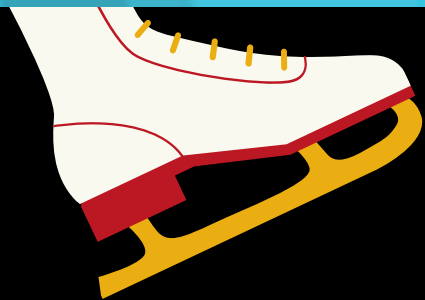
We would like to draw to the attention of all parents of children due to start Primary School in September 23/24 that the deadline date for applications to East Sussex County Council is midnight Sunday 15th January 2023. Any applications received after this date will be treated as 'late' and will only be considered after all on time applications have been allocated.



Eastbourne's Lightning Fibre

# ICE RINK

# EASTBOURNE ICE RINK



**Thank you to the EASTBOURNE CHAMBER OF COMMERCE for providing Gildredge House with a discount code for 10% off tickets to the newly opened Eastbourne Ice Rink**



**Eastbourne Ice Rink | Visit Eastbourne |**

[CLICK HERE](#)

**Lightning Fibre**

[CLICK HERE](#)

**(visiteastbournetickets.co.uk)**



**Use code**  
**Gildredge10**  
**to receive your discount on checkout.**



GILDREDGE HOUSE



@GILDREDGEHOUSE FREESCHOOL



WWW.GILDREDGEHOUSE.ORG.UK



