



ASPIRE

Gildredge House

# WEEKLY NEWS

WEEK 5 | TERM 6 | 7 JULY 2023



ASPIRE IN ALL THAT WE DO

## KEY REMINDERS - PENCIL CASES

Starting in September, all secondary students must bring a well-equipped pencil case to school every day. Compulsory items include blue and/or black ink pens, pencils, erasers, a ruler, a pencil sharpener, and green and purple pens for peer/self-assessment. Recommended items include a whiteboard pen, highlighters, coloured pencils, and a glue stick.

For exam-level students, we highly recommend a see-through pencil case. Please support students in regularly replenishing their pencil cases and labelling them to prevent loss or confusion.

This new compulsory requirement will greatly benefit students by promoting active participation and a sense of ownership. We appreciate your cooperation in implementing this requirement and supporting students in being well-prepared for their daily school activities.

## Key Dates

12TH JULY  
SECOND-HAND UNIFORM SALE  
MASTERS HOUSE  
2.30 - 4.00PM

17TH JULY  
END OF YEAR SCHOOL TRIP  
YEAR 7  
YEAR 9

18TH JULY  
END OF YEAR SCHOOL TRIP  
YEAR 8  
YEAR 10

19TH JULY  
LAST DAY OF TERM  
EARLY FINISH  
WHOLE SCHOOL

**NUT FREE SCHOOL - To safeguard our students, staff and visitors it is imperative that peanuts, nuts and anything nut based are NOT bought into school or consumed on the premises.**

## ASPIRE Points Totals



BADER

17482



CARTER

19485



HOPKINS

19657



JOHNSTON

19431



RAVILIOUS

20745



GILDREDGE HOUSE



@GILDREDGEHOUSE  
FREESCHOOL



WWW.GILDREDGEHOUSE.ORG.UK



ON AIR

# Gildredge House Radio Station Competition



## Radio Station Name..

As you will have read in Mr Bull's letter this week, we are launching a student-run Gildredge House radio station, and we need students' help in picking a suitable name. Please use the link [here](#) to suggest an appropriate Radio Station name linked to our school, and we will announce the winner in next week's newsletter. The winner will also have their winning Radio station name turned into Radio jingles for the upcoming shows. (N.B. please do not use AM/FM in the title).

15 Minutes



## Broadcasting..

Radio has been a staple of mass communication for over a century. It has the unique ability to reach a vast audience with ease, making it an essential tool for broadcasting news, music, and other forms of entertainment. Radio is still incredibly popular and we cannot wait for the students to get involved! The radio station will be run by the students of Gildredge House for the students of Gildredge House.

The development of radio technology has revolutionized the way people receive and consume information, and it continues to be a vital aspect of modern communication, which is why it's so beneficial to students to get involved in the Radio Station in the new Multimedia Centre we are opening in September 2023. Students will have more details to follow but it's certainly an exciting time to be a student at Gildredge House.



MIC  
LIVE



# Duke OF Edinburgh Award

## Duke of Edinburgh Silver Expedition



On Wednesday 28th June, 31 Year 10 students met at Offham ready to start their qualifying Silver D of E expedition.

They had to carry their food, tents, clothing and stoves for 3 days. Over the three days, they walked an average of 17 kilometres each day over the South Downs, doing all their map reading, cooking and putting up and taking down of tents. It is tough work doing all of this and they have shown resilience, determination, teamwork and patience all whilst being exhausted themselves!



I would like to congratulate them all on completing the award and we look forward to being able to hand out lots of certificates in the autumn term.

I would also like to thank the amazing team of staff who assisted me with the expedition and training. Without them giving up their time, these expeditions would not be possible. A huge thank you to Mrs Bray, Mr Kenth, Mr Twilley, Miss Hyland and Mrs Mace.



*Mrs K Maxwelll*

Head of Years 12 & 13



# Student Leadership

---

## Environment Agency and Coastal School's Partnership Coastal Management Day

On Wednesday 28th June, eleven Year 8 students from the Eco Committee attended a day at the seafront. The day was organised and run by a partnership between the Environment Agency and the Coastal Schools Partnership. As a member school of the Coastal Schools Partnership, Gildredge House and other local schools were asked to attend and give the Environment Agency an insight into the thoughts and feelings of students from across the local area.

The focus of the day was to raise awareness of the Environment Agency's plans to implement a new Shoreline Management Plan on the coastline running from Holywell to Pevensy Bay. The EA have a budget of £100 million, which is the largest in the UK, and this is to be used to modify the coastline to protect against a predicted sea level rise of 1.56m in the next 100 years, caused by climate change. The increased threat of future coastal flooding and erosion in the local area is also due to a predicted increase in storm activity, again linked to climate change.

During the day we visited Holywell, Princes Park, the Harbour, and Pevensy Bay. At each site, representatives of the EA and their partner coastal defence designers and engineers spoke to the students about the potential plans and ambitions for the future.

It was a great event, which culminated at Eastbourne College, where schools took part in a decision-making exercise. Students soon realised that the plans to protect our coastline from the effects of climate change are going to have both positive and negative effects on the local stakeholders. Making the planning of the future Shoreline Management Plan incredibly complex. Overall, it was a fantastic in-the-field educational experience and we thank the EA, CSP and Eastbourne College for organising and hosting.

*Mr. C. Dyer*

Teacher of Geography,  
Eco and Student Leadership Co-ordinator  
Coastal Schools Partnership Champ



GILDREDGE HOUSE



@GILDREDGEHOUSE  
FREESCHOOL



WWW.GILDREDGEHOUSE.ORG.UK

# GH SPORT SUCCESS

## YEAR 6 MIXED FOOTBALL COMPETITION

On Wednesday 21st June the Gildredge House Year 6 Football team took part in the Eastbourne Primary Partnerships annual football tournament. The event was held at the Saffrons Sports Club, and the conditions were amazing.

This event brought to a conclusion a league event that was interrupted by the weather earlier in the year. 5 schools arrived, hopeful of collecting the historical Collins Cup. A trophy that has been played for in Eastbourne for over 40 years.

Gildredge House started the competition in amazing form winning their first 3 games 3-0, 2-1 and 2-0 to put them top of the group stage. They then lost their final game in the group but moved forward to the Semi Final where they were to play The Haven School. The semi-final was extremely tense, and after going 1-0 down, the Gildredge boys showed incredible resilience and fight to claw the match back and win 2-1.

In the final, they met Willingdon Primary School. The game was very close, with both teams working very hard for each other. Just one goal separated the teams and unfortunately for the Gildredge team, it was Willingdon who scored it.

The students were fantastic throughout the day and we are extremely proud of them all.



# GH SPORT SUCCESS

## GILDREDGE HOUSE U9 GIRLS TENNIS SQUAD



On Monday, June 12th, The Gildredge House U9 Girls Tennis Squad travelled to Bede's Prep School for their annual tournament. The girls were fantastic throughout the day, and they made it through to the final. The girls were beaten in the final by a very strong Bede's A team, but secured an amazing second place, receiving Silver medals for their efforts. However, this was not their only achievement in the tournament as they won the gold medal for fair play, for their outstanding displays of sportsmanship, support and integrity in the competition.

We are very proud of their efforts.



GILDREDGE HOUSE



@GILDREDGEHOUSE  
FREESCHOOL



WWW.GILDREDGEHOUSE.ORG.UK

# WEEKLY CLASS ATTENDANCE

At Gildredge House, we believe that outstanding attendance is important to ensure children are safe and have full access to the educational provision made for them.

We closely monitor attendance for all students in both Primary and Secondary. We celebrate, weekly, the top two classes with the highest attendance rates in both phases of the school.

Week: Monday 26th June to Friday 30th June 2023

Congratulations to:

## Primary

3B = 98.7%  
5B = 98.7%

## Secondary

8B = 96.6%  
9R = 96.8%



## MENU

### WEEKLY MENU

### Gildredge House School Summer Menu 2023 - Week 4

Monday

Tuesday

Wednesday

Thursday

Friday

Beef Lasagne topped with Cheese & Crispy Onions

Conchiglie Pasta Creamy Carbonara - Creamy Sauce with Chunks of Ham

BBQ Pulled Pork served in a Yorkshire Pudding

Jerk Chicken Thigh with Creamy Coconut Rice & Peas

Battered Fish of the Day

Cheesy Salsa Quesadilla

Plant Based Meatballs with Pasta in a Tomato Herb Sauce

Roast Vegetable Layered Moussaka

Quorn & Vegetable Thai Style Green Curry

Vegetable & Basil Frittata

Garlic Bread Slice

Roast Potatoes

Creamy Coconut Rice & Peas

Chipped Potatoes

Side Salad

Sweetcorn & Peppers

Vegetable Medley

Baked Beans or Peas

Fusilli Pasta with Basil Pesto

Jacket Potato with Baked Beans & Grated Cheese

Fusilli Pasta with Tomato Basil Sauce

Jacket Potato with Baked Beans

Fusilli Pasta with Tomato Herb Sauce

Strawberry Mousse

Rocky Road Slice

Vanilla Ice Cream Tub

Sticky Toffee Pudding

Fresh Fruit Salad



GILDREDGE HOUSE



@GILDREDGEHOUSE FREESCHOOL



WWW.GILDREDGEHOUSE.ORG.UK



GILDREDGE HOUSE SCHOOL



# PRE-LOVED UNIFORM SHOP OPEN 12 JULY 2:30 TO 4PM

COME AND SEE US IN  
MASTER'S HOUSE, CASH  
SALES ONLY PLEASE

WE NEED YOUR SECONDARY  
SCHOOL UNIFORM FOR  
RESALE, QUALITY  
DONATIONS WELCOME



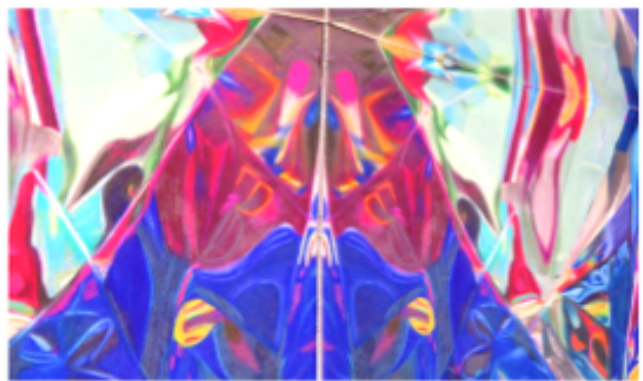


## Gildredge House warmly invite you to the GCSE Creative Arts Exhibition

Thursday 13<sup>th</sup> July from  
5.30pm - 6.00pm  
in the Atrium

View work produced by  
the YR11 Art and  
YR11 Product Design  
students

We would love you to come



Gildredge  
House

