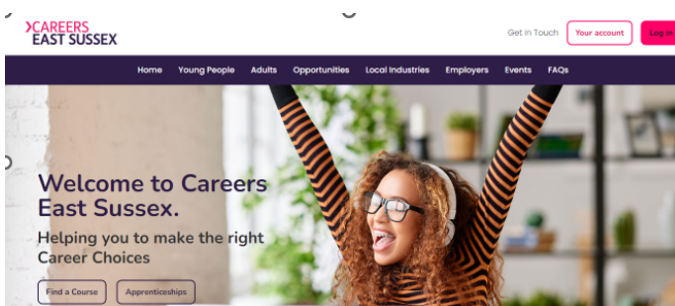




Helpful Careers sites to support your career choices

Careers East Sussex

Very soon all Year 10 students will be logging into Careers East Sussex (CES) to start making their Post-16 course and education choices. CES is the careers platform all Post-16 institutions use to process applications. As it is an open platform, students, parents and carers can also have access to it. It's never too late to consider your options and if you're a parent/carer of a student in secondary school, you are encouraged to engage in this site with your young person. On the open site you can explore your options on offer locally which includes everything from A-Levels, Level 3 courses, T-Levels, Apprenticeships and so much more. You can also look for local employment sectors and even search courses, colleges and sixth forms, apprenticeships and courses local to Eastbourne. To find out more, visit <https://www.careerseastsussex.co.uk/>



Morrisby

Gildredge House holds a subscription to Morrisby, a careers guidance platform open to all KS3/KS4 and KS5 students. This platform enables Gildredge House students to explore a range of careers and encourages them to complete tasks which can support their careers research. Alongside this, the careers department can track the careers support your child has received. Students can use their school login to access the site. <https://www.morrisby.com/>



The National Careers Service

The National Careers Service is a one stop shop for exploring all careers. Take the careers quiz and see which career you could match to. The skills test is available here

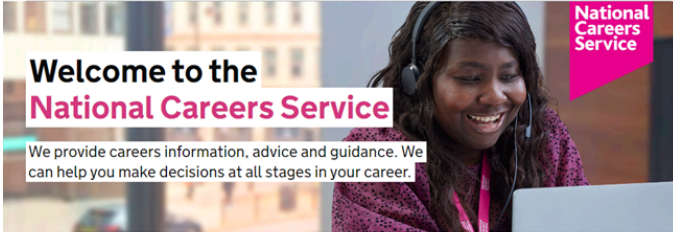
<https://nationalcareers.service.gov.uk/skills-assessment>

Alternatively, check out the A-Z of careers by exploring careers by categories. There are thousands of careers, many of which you would never have known existed.



National Careers Service
[Explore careers](#) [Skills assessment](#) [Find a course](#) [Contact us](#) [Action plans](#) [Careers advice](#)

BETA Complete an independent survey to [give us feedback](#) about our website.



Welcome to the National Careers Service

We provide careers information, advice and guidance. We can help you make decisions at all stages in your career.

National Careers Service

Get personalised careers advice and information

National Careers Service
[Explore careers](#) [Skills assessment](#) [Find a course](#) [Contact us](#) [Action plans](#) [Careers advice](#)

BETA Complete an independent survey to [give us feedback](#) about our website.

[Home](#) > [Explore Careers](#) > [Animal care](#)

Animal care

Agricultural contractor

Agricultural contractors provide specialised, seasonal or temporary services to farmers.

Agricultural inspector

Agricultural inspectors make sure animal welfare and environmental standards are followed in farms and dairies.

Animal care worker

Animal care assistant
Animal care workers look after animals in kennels, rescue centres and sanctuaries.

Animal technician

Other job categories

- [Administration](#)
- [Beauty and wellbeing](#)
- [Business and finance](#)
- [Computing, technology and digital](#)
- [Construction and trades](#)
- [Creative and media](#)
- [Delivery and storage](#)
- [Emergency and uniform services](#)
- [Engineering and maintenance](#)
- [Environment and land](#)
- [Government services](#)
- [Healthcare](#)
- [Home services](#)
- [Hospitality and food](#)
- [Law and legal](#)
- [Managerial](#)
- [Manufacturing](#)

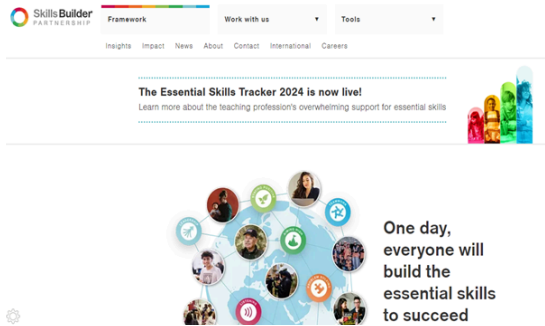
Animal Care

Animal Care above offers 30 jobs, each job displays the average salary, working hours and the skills, education/training needed. You can visit the National Careers Service <https://nationalcareers.service.gov.uk/>

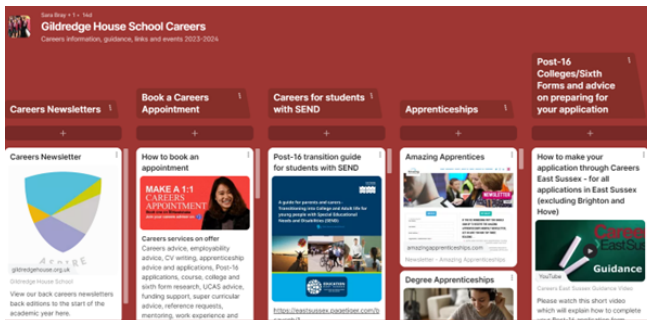


SkillsBuilder - build your employability skills

Gildredge House is a SkillsBuilder School and SkillsBuilder is a fantastic website to support anybody looking to improve their employability skills. Parents and young people can browse at the framework for employability skills and see if they can reach Level 15. This site is not just suitable for students, it's great for anybody in employment. Check it out [Here](#)



For further information of useful websites to explore careers research, visit our Careers Page on our website here <https://www.gildredgehouse.org.uk/home/students/student-careers/> Take a look at our Careers Noticeboard/Padlet [here](#) which has over 30 careers tabs to explore.





Gildredge
House

Aspire
In all that we do

Join the Gildredge House Careers Business Partnership

Are you a parent, an employer or an employee who would like to get involved and support our careers programme here at Gildredge House? If you have a little time to spare the careers department would love to hear from you. Network with other businesses, build on your employability skills and take pride in supporting our School.



For an informal chat on how you can get involved, please email Sara Bray s.bray@gildredgehouse.org.uk or telephone the careers department on 01323 400650 ext 2037.



Brighton School of Medicine May 2024

If you are interested in studying to become a medic, then you must contact Brighton School of Medicine and start your journey to become a doctor. BSMS are holding open days on Thursday 9 May and our in-person Open Day on Saturday 15 June.

For more information about both Open Days, please [click here](#) Open days -



Brighton School of Medicine May Events 2024

OneSizeFits1 Online Workshop - Wednesday 15 May 2024

Young people between the ages of 15-25 with an interest in science and healthcare and/or creative arts you are invited to attend the OneSizeFits1 workshop to help create activities for an upcoming in-person event.

The online session will take place on Wednesday 15 May from 5-6:30pm, with further information regarding the date and time of the in-person event to be confirmed in the future.

For more information and to register, please [click here](#).

For further information on the work of Brighton School of Medicine, visit their website <https://www.bsms.ac.uk/index.aspx>

Training Opportunities for Everyone

Heathercroft Training, a local training provider would like to make our school community aware of the many training opportunities open to students, parents/carers, grandparents, and friends. Below are a list of training opportunities on offer.



If you would like to chat to somebody about these courses, please call Heathercroft on 01323 411517 or email enquiry@hts.ac.uk

Heathercroft Training



FREE COST OF LIVING BUDGETING COURSE
 & £20 voucher upon completion



FREE HELP WITH HOMEWORK COURSE
 & £20 voucher upon completion



BECOME MORE CONFIDENT WITH NUMBERS

If you want to help your child with maths homework, and feel like you could do with a refresher then this is the course for you. Make maths fun and easy for the whole family!

This programme is for anybody 19+ years old who hold the following maths grades:

- CSE - 2, 3, 4, 5 or U
- O-Level - D, E or U
- GCSE - D, E, F, G or U
- GCSE - 3, 2, 1 or U

Programme Details:

- 16 hours over 8 weeks
- Online or in-person training sessions



GET IN TOUCH TODAY TO LEARN MORE

01323 411517
 enquiry@hts.ac.uk
 www.hts.ac.uk

SCAN ME



DON'T LET MATHS HOLD YOU BACK

BECOME MORE CONFIDENT WITH NUMBERS

From managing your bills to helping with your kid's homework, good numeracy skills can unlock opportunities to help you achieve more.

This programme is for anybody 19+ years old who hold the following maths grades:

- CSE - 2, 3, 4, 5 or U
- O-Level - D, E or U
- GCSE - D, E, F, G or U
- GCSE - 3, 2, 1 or U

Programme Details:

- 16 hours over 8 weeks
- Online or in-person training sessions



GET IN TOUCH TODAY TO LEARN MORE

01323 411517
 enquiry@hts.ac.uk
 www.hts.ac.uk

SCAN ME



Heathercroft Training



FREE MATHS REFRESHER COURSE
& £120 cash tax free upon completion



BECOME MORE CONFIDENT WITH NUMBERS

Is figuring out figures more of a challenge than you'd like? If you work in East Sussex, and could do with a quick refresher out of work hours, this is the course for you!

The programme is for anybody 19+ years old who holds the following maths grades:

- CSE - 2, 3, 4, 5 or U
- O-Level - D, E or U
- GCSE - D, E, F, G or U
- GCSE - 3, 2, 1 or U

Programme Details:

- 16 hours over 8 weeks
- Online or in-person training sessions

After completing this short course you will receive **£120 tax free**

GET IN TOUCH TODAY TO LEARN MORE

01323 411517
enquiry@hts.ac.uk
www.hts.ac.uk

SCAN ME




FREE MATHS REFRESHER COURSE
& £120 cash tax free upon completion

Careers in Health and Social Care

Social care is about providing physical, emotional and social support to help people live their lives. For various reasons and at different stages in their lives, some people need support to develop and maintain their independence, dignity and control.

“ The social care sector employs 1.48 million people and will have half a million extra jobs available by 2030. ”

Visit the Think Care Careers website for details of the roles and progression available in social care, which include:

You can also see how to develop in these roles, from entry level to senior manager.





Careers in Health and Social Care

Click on the Health Careers links below to see some of the health roles that work closely with or are also employed in social care settings:

- the allied health professions [We are allied health professionals | Health Careers](#)
- occupational therapists [Information on being an occupational therapist - Degrees and Courses - Health Careers](#)
- management [Management | Health Careers](#)
- nursing [Nursing careers | Health Careers](#)
- psychological therapies [Psychological professions | Health Careers](#)
- public health [Public health | Health Careers](#)
- the wider healthcare team [Wider healthcare team | Health Careers](#)
- administrative staff [Administration | Health Careers](#)
- social work [19] [Social worker | Health Careers](#)



Careers in Manufacturing

Manufacturing involves the creation of new products directly from raw components and materials. They're also known as production jobs, as they involve the physical, mechanical and chemical transformation of raw materials to create a functional and useful item. Production jobs use power-driven machines and material-handling equipment to transform substances into new products. You will find production jobs in factories, plants, mills and even at home. The eight most common manufacturing sectors are:

Food production, beverages, textiles, wood and paper printing, computer and electronic product manufacturing, electronic equipment, appliances and components, primary metal and machinery, and transportation equipment manufacturing. If you would like to know more about the jobs in high demand in the manufacturing sector, please visit [A Complete Guide to Manufacturing Jobs \(With Examples\) | Indeed.com UK](#)

